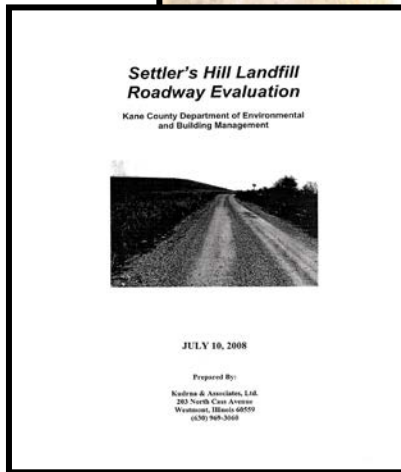
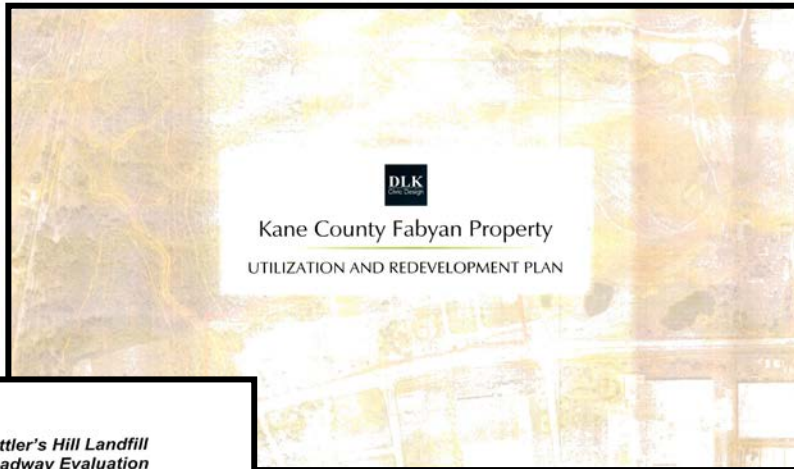


- Karen McConnaughay, Chairman, Kane County Board
- John Hoscheit, President, KCFPD
- Kevin Burns, Mayor of Geneva
- Jeff Schielke, Mayor of Batavia
- Phil Lewis, Kane County Board Member
- Mark Davoust, Kane County Board Member
- Mike Donahue, Kane County Board Member
- Monica Meyers, Executive Director, KCFPD
- Tim Harbaugh, Executive Director, Environmental Mgmt

Fabyan Utilization Study



Utilization & Development Studies

- DLK Civic Design
May 2007
- Kudrna & Associates, Ltd.
July 2008
- Illinois Institute of Technology
March 2009

Fabyan Utilization Study



Utilization Committee Study Goals

- Increase and Create User Based Activities
- Protect and Enhance Environmental Attributes
- Confirm Features through Economic Evaluation

Fabyan Utilization Study

Fabyan Utilization User Based Activities



- Historically known as a Recreation Area
- Maximize existing assets and return remainder to residents
- Develop new uses and special features

Fabyan Utilization Study

Proposed Environmental Attributes



Sustainability . . .

- 2040 Comprehensive Plan
Focused on healthy living
Emphasize Water Quality
- Is a long standing
Kane County Goal
- Is a major component
of the Site Design
- Will improve and enhance
water quality in the area

Fabyan Utilization Study

Proposed Economic Evaluation



- Test all uses through an environmental filter
- Provide for adjacent private land development
- Recommend uses that qualify for matching Grant Funds
- Implement fee driven pay back uses

Fabyan Utilization Study

Conceptual Development Existing Assets



1. Cougars Stadium
2. Parking ± 2500 Cars
3. Stricker's Soccer
4. Ice Arena
5. Forest Preserve Offices
6. Settler's Hill Golf Course
7. Natural Wooded Area
8. Soccer Fields
9. Private Property
10. Old Jail Site
11. Stone Homestead
12. Existing Drainage

Fabyan Utilization Study

Conceptual Development Proposed Uses



1. Overlook Observatory
2. First Tee/Golf Expansion
3. Winter Recreation
4. Mountain Bike Trails
5. Music/Activity Venues
6. Event Access Area
7. Recreational Activities, Sports Fitness & Training
8. Track and Field Trails
9. Resort & Private Development
10. Historic Settlement
11. Internal Roadway
12. Improved Water Quality

Fabyan Utilization Study



Overlook Observatory

- Celestial Clock
- Armillary
- Telescopes
- Viewfinder
- Natural Boulders
- Seating Areas



Fabyan Utilization Study

Settler's Hill Golf Course

- The First Tee Youth Development Program
- Golf Course Renovation
- Driving Range Expansion

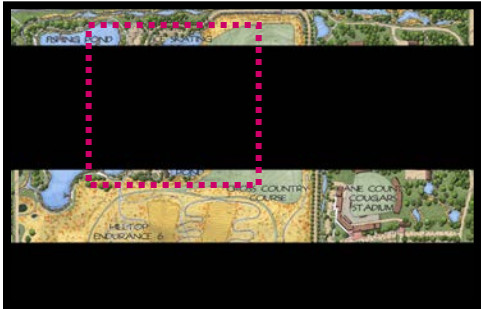


Fabyan Utilization Study



Winter Recreation

- Sledding/Tubing/Toboggan Hill
- Ice Skating Pond
- Cross Country Skiing



Music/Activity Venues

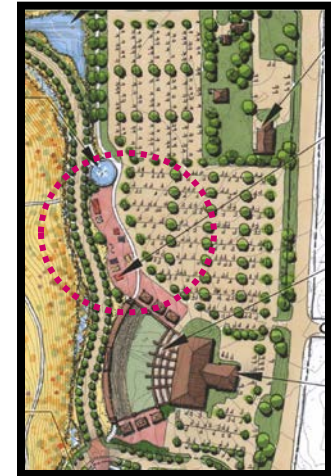


Fabyan Utilization Study



Event Access & Staging

- Entrance Gate or Pavilion
- Event Registration
- Event Activities includes
 - Vending
 - Merchandizing
 - Ticketing



Fabyan Utilization Study

Private Development Opportunities

- Market Driven Development
- Promote Private Tax Base
- Connected to Overall Concept
- Sports Fitness & Rehabilitation



MARIOTT-LINCOLNSHIRE



PHEASANT RUN RESORT



ROCKFORD CLOCK TOWER

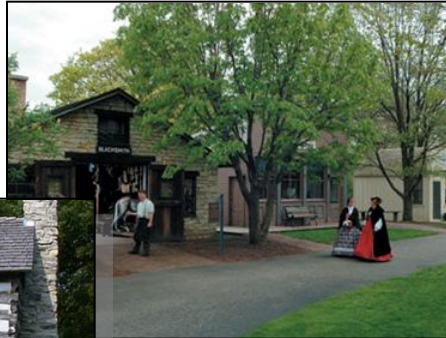


Fabyan Utilization Study



Historic Settlement

- Educational Benefit
- Space Holder for Land
- Activity Enhanced with Resort
- Location For County Historic Buildings



Fabyan Utilization Study

Conceptual Features



Internal Circulation Road

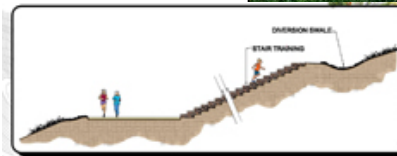
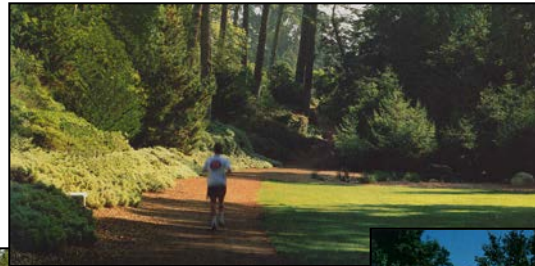
- Necessary to Maximize Private Development
- Provides for Traffic Dispersion on Site
- Connects Interior Uses Without External Traffic Impact
- Include Best Management Practices



Fabyan Utilization Study

Conceptual Features

NATURAL TRAILS



STAIR TRAINING



TRAIL FEATURES



ADA REST AREAS ALONG SLOPED TRAILS
SEATING AREAS
DRINKING/CARDIAC TESTING STATIONS WITH SHADE STRUCTURE
OBSTACLE COURSE
FITNESS CLUSTER



Recreational Activities, Sport & Fitness Training

- Natural Recreation Features
- Running Trails / Walking Trails
- All Age Group Trail Designations
- Obstacle Course Trails
- Athletic Training & Rehabilitation

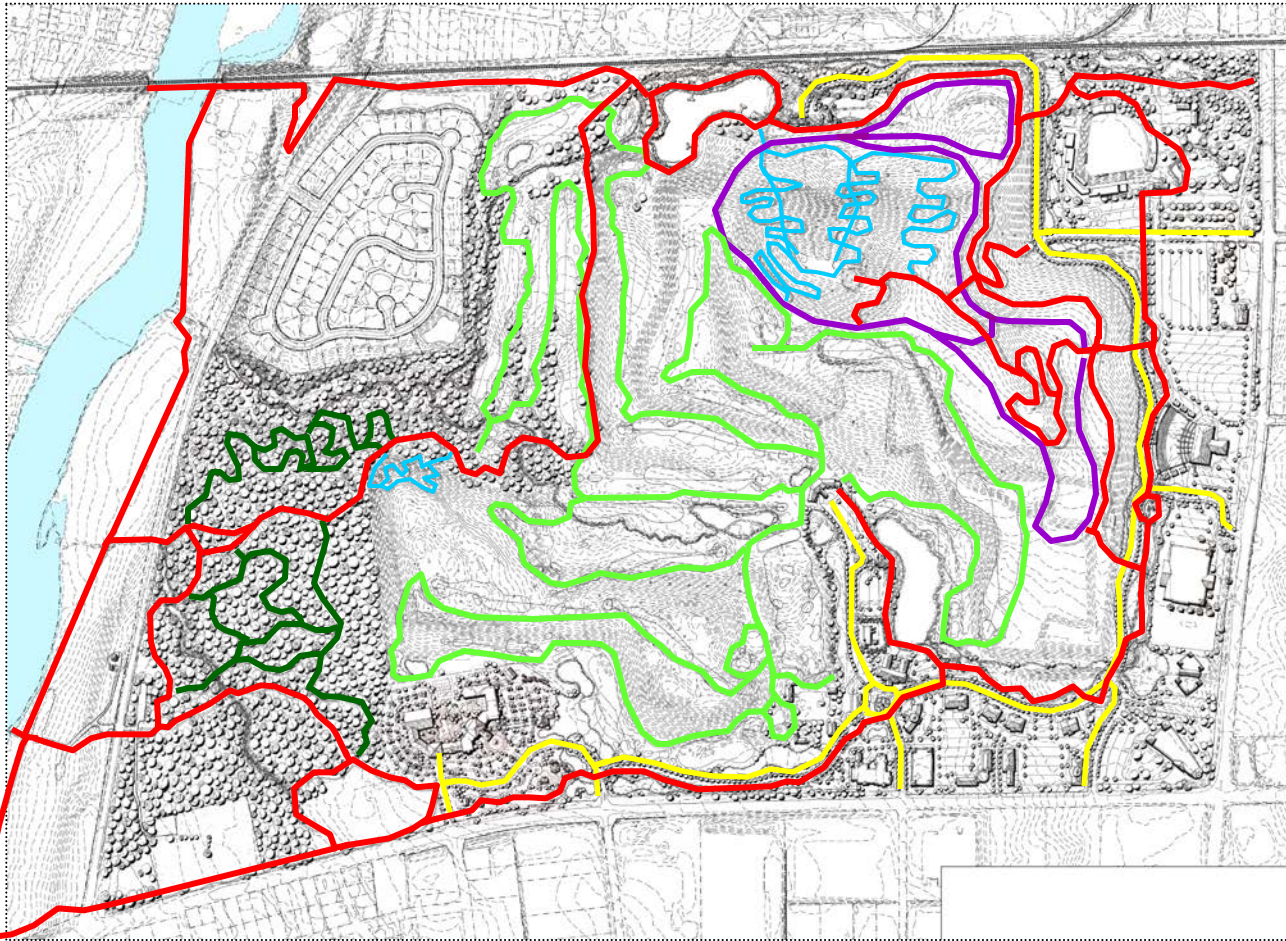


Fabyan Utilization Study

Cross Country Track and Skiing Trails



Fabyan Utilization Study



Trail Map

- Multi-Use Trail (8' Wide)
- Cross Country Trail (10' Wide)
- Bike Only Trail (3' Wide)
- Golf Cart Path (6' Wide)
- Sidewalk (5' Wide)
- Existing Woodland Trail (Varies)